

WEST MANOR ELEMENTARY SCHOOL

Weekly Construction Progress Report
Week 02/01/2021-02/05/2021



Balfour Beatty

Current Activities 02/01/21-02/05/21

- Continue Gymnasium addition roof decking.
- Continue MEPF overhead rough-in at Renovation.
- Continue installation of mechanical and electrical equipment.
- Continue in-wall MEP rough at Renovation.
- Continue gymnasium wall backfill.
- Continue waterproofing as back fill continues.
- Continue interior metal framing at renovation.
- Continue interior and exterior masonry at renovation.
- Start exterior masonry at gymnasium.
- Continue paint and prep at East wing.
- Start paint and prep at North wing.
- Continue roofing replacement.
- Continue hang/tape/finish drywall.
- Continue ceiling grid in SW wing & Cafeteria and MEP trims.
- Prep/place classroom addition footings.
- Start forming classroom addition foundation walls.

Upcoming Activities 02/08/21-02/12/21

- Continue Gymnasium addition roof decking.
- Continue MEPF overhead rough-in at Renovation.
- Continue installation of mechanical and electrical equipment.
- Continue ceiling grid and MEP trims at renovation.
- Continue in-wall MEP rough at Renovation.
- Continue foundation drain and wall backfill (Pending weather)
- Prep/place classroom addition foundation walls (Pending weather)
- Prep/place classroom addition SOG. (Pending weather)
- Continue foundation wall waterproofing. (Pending weather)
- Continue interior metal framing at renovation.
- Continue hang/tape/finish drywall.
- Continue interior and exterior masonry at renovation.
- Continue exterior masonry at gymnasium.
- Continue wall prep and paint.
- Continue roofing replacement.
- Continue admin addition steel.



Balfour Beatty



Gymnasium Roof Decking



TPO Roofing Replacement

Activities



South Gymnasium Wall Backfill



Gymnasium Plumbing Rough In



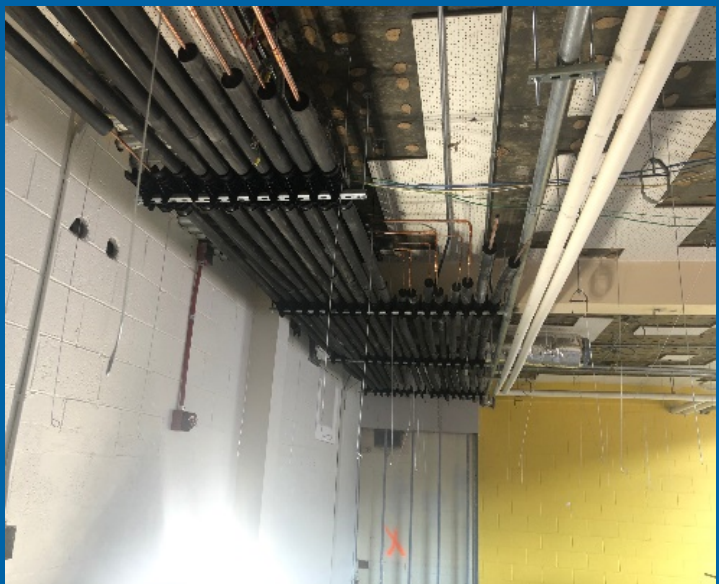
Gymnasium Exterior CMU Walls



SW Wing Ceiling Grid and MEP Trims



North Wing Steel/CMU Complete and Shoring Removed



East Wing VRF Installation



Project Schedule

- Schedule Status: On Schedule



Project Financials

- Construction GMP: \$11,000,000
- Progress Billed to Date: \$2,711,077
- Budget Status: Within GMP

